



4 Cameron Wharf, Stone, Staffordshire, ST15 8JX

A stylish & well presented first floor apartment in a sought after modern development, overlooking the canal & just a few minutes walk from Stone town centre, close to local amenities, railway station, restaurants & pubs, etc. With accommodation comprising: entrance hall, spacious living room diner with canal side balcony, fully fitted kitchen with appliances, two bedrooms & modern bathroom. Just redecorated & benefitting from double glazing throughout, gas combi central heating, allocated parking with visitor spaces.

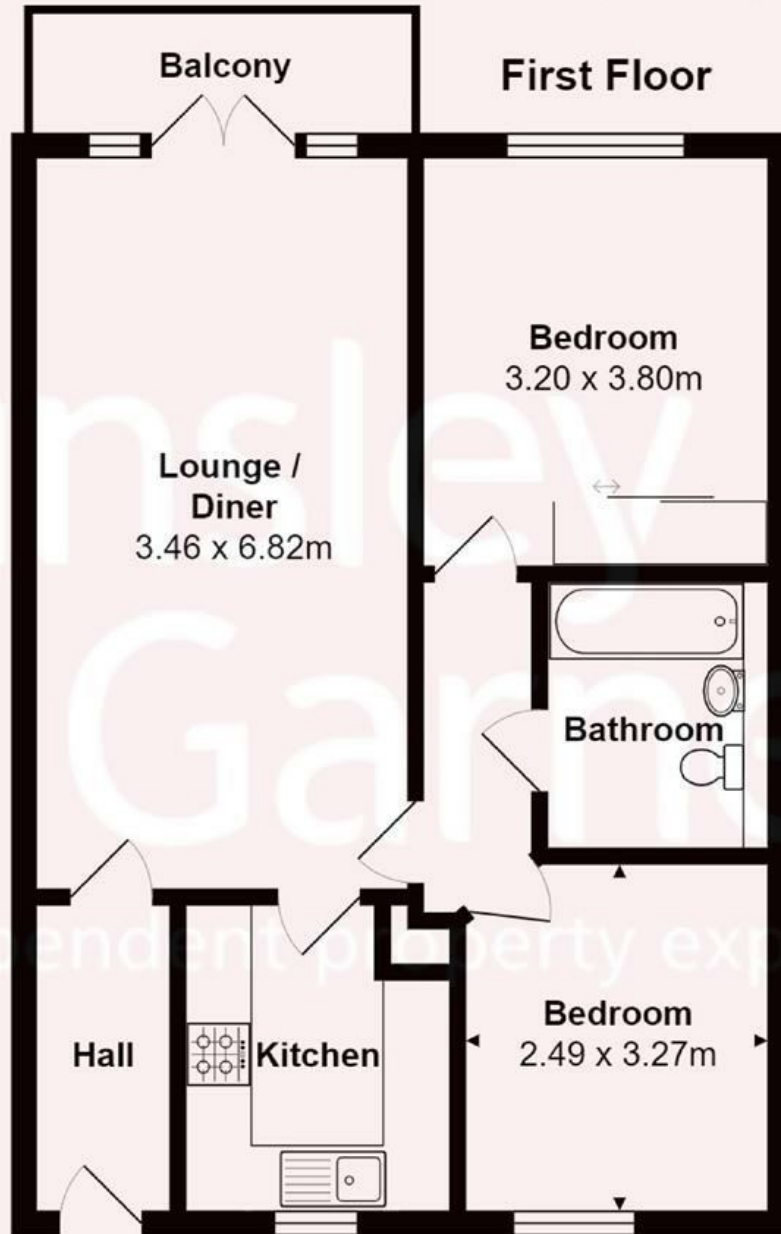
Unfurnished - Available Immediately

STRICTLY NO PETS

Managed by Tinsley Garner Limited

£925 Per Calendar Month

Total Area: 67.0 m² (excluding balcony)



All contents, positioning & measurements
are approximate and for display purposes only
Plan produced by Thorin Creed

Energy Efficiency Rating			
	Current	Potential	
Very energy efficient - lower running costs			
(92 plus) A			
(81-91) B			
(69-80) C			
(55-68) D			
(39-54) E			
(21-38) F			
(1-20) G			
Not energy efficient - higher running costs			
England & Wales	EU Directive 2002/91/EC		

Environmental Impact (CO ₂) Rating			
	Current	Potential	
Very environmentally friendly - lower CO ₂ emissions			
(92 plus) A			
(81-91) B			
(69-80) C			
(55-68) D			
(39-54) E			
(21-38) F			
(1-20) G			
Not environmentally friendly - higher CO ₂ emissions			
England & Wales	EU Directive 2002/91/EC		